

ONLINE CNC MACHINERY, TOOLROOM, FORKLIFTS AND PLANT SUPPORT AUCTION

ONLINE ONLY AUCTION

CNC MACHINING CENTERS & TURNING CENTERS
• CNC GUN DRILLS • TOOLROOM • FORKLIFT • SAWS

By Order of: **R&S Machine Center, Inc.**

44 Academy Street, West Chazy, New York 12992

(Also Included Surplus of Major Aerospace Companies located in CT, MA & NY)



New
2006

Low
Hours

HAAS # VF-2B CNC VMC

Over
400 Lots



New
2014

1 of 7

HAAS # VF-2 CNC VMC



New
2011

Fanuc
Control

Low
Hours

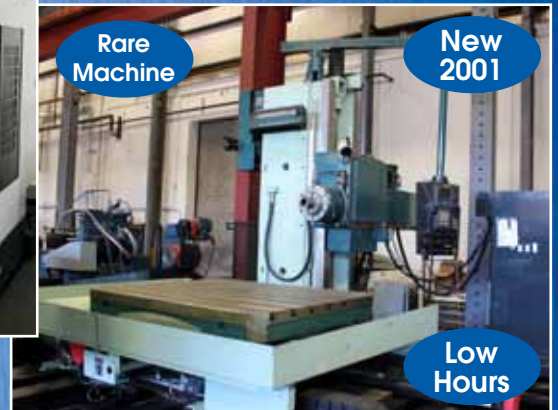
FEELER # VMP-1100 CNC VMC



New
2007

1 of 5

HAAS # SL-30L "Long Bed" CNC Turning Center



Rare
Machine

New
2001

Low
Hours

KURAKI #KBT-11W CNC Boring Mill

SALE DATE: TUESDAY, October 4th 1:00 PM (ET)

INSPECTION: October 3rd, 9:00 - 3:00 (West Chazy, NY ONLY) (All other locations - By Appointment ONLY)
Tom DeCosmo, Jr. (413) 530-0019 tdecosmo@thomasauction.com



Sale under Management of:
Thomas Industries, Inc.
2414 Boston Post Road, Guilford, CT 06437-2310
Phone (203) 458-0709 • Fax (203) 458-0727
email: gavel@thomasauction.com
www.thomasauction.com



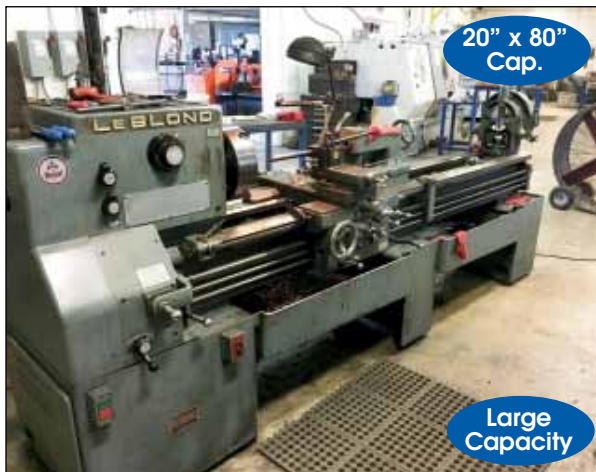
EXCELLENTLY MAINTAINED LATE MODEL EQUIPMENT



HAAS # SL-20T CNC TURNING CENTER



HAAS # VF-3B CNC VMC



LEBLOND #REGAL "SERVO-SHIFT" ENGINE LATHE



LODGE & SHIPLEY ENGINE LATHE



COSEN #C-260-NC "AUTOMATIC" BAND SAW



HAAS # VF-2 CNC VMC

SALE DATE: TUESDAY, OCTOBER 4TH, 1:00 PM (ET)



25 HP

New 2013

CHICAGO PNEUMATIC #QRS-25HP-UL AIR COMPRESSOR



ASQUITH RADIAL DRILL



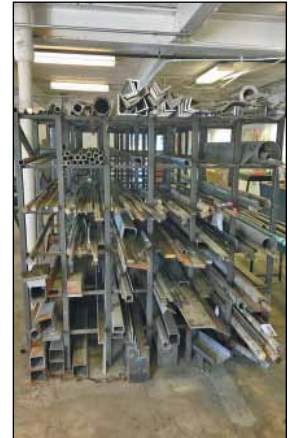
Late Model

GROB # 4V-24 VERTICAL BAND SAW

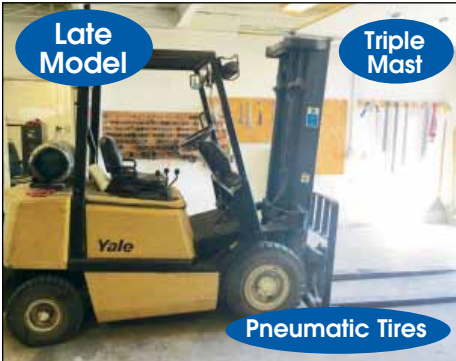


1 of 6

BRIDGEPORT 1.5 HP VERT. MILLER



VIEW OF RAW MATERIAL W/RACK



Late Model

Triple Mast

Pneumatic Tires

YALE 5,000 LB. FORKLIFT



DRO

Late Model

CINCINNATI # 207MK HORIZONTAL MILLER



1 of 4

MILLER # SYNCROWAVE-250 WELDER



MITUTOYO #QM-350 DIGITAL HITE GAGE



VIEW OF LATE STYLE TOOL BOXES



24.5"x144" Cap.

Large Capacity

MONARCH ENGINE LATHE



DAEWOO # LYNX-200 CNC TURNING CENTER



Fanuc #OT

IKEGAI #TC-8 CNC TURNING CENTER



New 2008

Fanuc Control

LEADWELL # LTC-25BL CNC TURNING CENTER



Pallet Shuttle

Low Hours

HITACHI-SEIKI # VM-40-III CNC VMC

**INSPECTION: OCTOBER 3RD, 9:00 - 3:00 (WEST CHAZY, NY ONLY)
ALL OTHER LOCATIONS - BY APPOINTMENT ONLY**

MANY (3, 4, & 5-AXIS) CNC MACHINING CENTERS AVAILABLE!



MORI-SEIKI # SV-50 CNC VMC



FEELER # VMP-1100 CNC VMC



MATSUURA # ES-550 CNC VMC



KITAMURA # 4X-IF "4-AXIS" CNC VMC



HAAS # VF-2B CNC VMC



DAEWOO # DMH-400 "DIAMOND SERIES" CNC HMC



CINCINNATI # HC-2500 CNC "5-AXIS" CNC HMC



SHIZUOKA CNC VMC



MOR I-SEIKI # SH-63 "FULL 4-AXIS" CNC HMC



MOR I-SEIKI # SH-63 "FULL 4-AXIS" CNC HMC



KITAMURA # MYCENTER-HX-500I CNC HMC



MAKINO # A-77 "4-AXIS" CNC HMC



DEVLEIG # 4W-72 CNC JIG MILL

SALE DATE: TUESDAY, OCTOBER 4TH, 1:00 PM (ET)



CINCINNATI # HC-2500 CNC "5-AXIS" CNC



ELDORADO # KM-90 CNC GUN DRILL



BLANCHARD # 18-36 VERT. ROTARY GRINDER



HAUSER-SIP # 5SM-311 CNC JIG GRINDER



EDGETEK "5-AXIS" SUPER ABRASIVE GRINDER



OKAMOTO # ACC-16-32 EXB CNC SURFACE GRINDER



MITSUI-SEIKI # 3-GB JIG GRINDER



LAPOINTE 120" BROACH



AEM 50" BELT GRINDER-SANDER



BLANCHARD # 11-16 VERT. ROTARY GRINDER



LAPOINTE 120"/180" "RE-BUILT" CNC BROACH



TSUDAKOMA CNC "4TH-AXIS" TABLE



TSUDAKOMA CNC "4TH-AXIS" TABLE

LARGE QUANTITY OF NEW GRINDING WHEELS, TOMBSTONES & TOOLING



Fully Automatic

Late Model

MARVEL # V-18A "AUTOMATIC" VERTICAL BAND SAW



Late Model

Fully Automatic

AMADA # 250-W "AUTOMATIC" HORIZONTAL BAND SAW

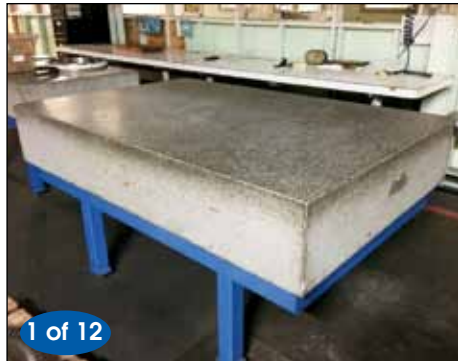


Late Model

Well Tooled

17" x 59" Cap

SOUTH BEND # 450 "GAP BED" ENGINE LATHE



1 of 12

GRANITE SURFACE PLATE W/ STAND



1 of 2

BRIDGEPORT MILLING HEAD



1 of 6

MID-STATE TOMBSTONE



MID-STATE TOMBSTONE



SWECO VIBRATORY SPIN-FEED BOWL



VIEW OF CNC TOOLING AVAILABLE



VIEW OF USED FANUC BOARDS & MOTORS



VIEW OF "NEW" GRINDING WHEELS

AUCTION INFORMATION

ONLINE ONLY AUCTION

By Order of:

R&S Machine Center, Inc.

44 Academy Street, West Chazy, New York 12992

SALE DATE: TUESDAY, October 4th 1:00 PM (ET)

INSPECTION: October 3rd, 9:00 - 3:00 (West Chazy, NY ONLY) (All other locations - By Appointment ONLY)
(Also Included Surplus of Major Aerospace Companies located in CT, MA & NY)

Buyer's Premium: 15%

Payment Due In Full:

Wednesday, October 5th, 2016

Removal: All items must be removed by
October 14th and 21st for Major Items

Online Registration:

www.thomasauktion.com

Auction Details: Bidspotter.com



Payment Types: Certified Check or Wire Transfer

Disclaimer: Auctioneer is not responsible for errors, omissions, additions or deletions. Items offered may not necessarily be sold as described and/or photographed. Buyers should verify all aspects of their potential purchases during inspection as all items offered will be sold "as is, where is" with all faults. Please check with the auctioneer's office for additions or deletions.

As-Is Where-Is: All Items Are Sold "As-Is Where-Is" With No Warranty or Guarantee of Operating Condition. Auctioneer Strongly Recommends That Buyers Inspect Equipment Prior to Bidding.

Removal Costs: Buyers are fully responsible for all cost to remove their purchases. Please get removal quotes prior to bidding and bid accordingly. All Riggers must be approved by Auctioneer and/or Consignors.

Legally Binding Contract: All bids constitute a legally binding contract and bidders will be legally obligated to make payment and remove items in accordance with the terms and conditions of the sale.

Proxy Bids: If you are unable to participate in this sale Proxy Bids are accepted. Proxy bids may be submitted online directly from the lot catalog or call (203) 458-0709 for a proxy bid form.

TECHNICAL INFORMATION

**Tom DeCosmo, Jr. (413) 530-0019 or
Tom DeCosmo (413) 478-0030**

PAYMENT INFORMATION

Irina Lekhmus (203) 458-0709 X108

ONSITE INFORMATION

Jon Standish (203) 915-3430

UPCOMING AUCTIONS

MAGELLAN AEROSPACE - Bethel, CT

and

DEEP SEA SYSTEMS INTERNATIONAL - Cataumet, MA

Large Selection of:
CNC Machinery • EDM's • Inspection

ONLINE ONLY

Tuesday, November 15th



Under Management of:
THOMAS INDUSTRIES

2414 Boston Post Road
Gulfport, CT 06437-2310

(203) 458-0709 • (203) 458-0727 Fax
<http://www.thomasauktion.com>

**TURN YOUR SURPLUS
MACHINERY TO \$\$\$**

Call Now to Consign Items in
Our Upcoming Consignment

Auctions

Contact: Tom DeCosmo Jr.

Email: tdecosmo@thomasauktion.com

Phone: 413-530-0019

AUCTION ITEM LOCATION INFORMATION AT WWW.THOMASAUCTION.COM

THIS BROCHURE IS A PARTIAL LISTING. COMPLETE LOT CATALOG & PHOTOS AT www.ThomasAuction.com

ONLINE BIDDING ONLY - WWW.THOMASAUCTION.COM

Under Management of:



THOMAS INDUSTRIES
2414 Boston Post Road
Guilford, CT 06437-2310
(203) 458-0709 • (203) 458-0727 Fax
<http://www.thomasauction.com>



ONLINE ONLY AUCTION

By Order of:

R&S Machine Center, Inc.

44 Academy Street,
West Chazy, New York 12992

FORWARDING SERVICE REQUESTED

SALE DATE:

TUESDAY, October 4th
1:00 PM (ET)

INSPECTION:

October 3rd, 9:00-3:00 (West Chazy, NY ONLY)
(All other locations - By Appointment ONLY)

Buyer's Premium: 15%

Also Included Surplus of Major Aerospace Companies located in CT, MA & NY

By Order of: R&S Machine Center, Inc.

44 Academy Street, West Chazy, New York 12992

SALE DATE: TUESDAY, October 4th 1:00 PM (ET)

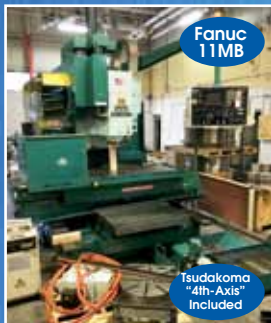
INSPECTION: October 3rd, 9:00 - 3:00 (West Chazy, NY ONLY) (All other locations - By Appointment ONLY)



New 2007

Fanuc Control

OKAMOTO # ACC-16-32 EXB CNC SURFACE GRINDER



Fanuc 11MB

Tsudakoma "4th-Axis" Included

MATSUURA # MC-1500 "4-AXIS" VMC



New 2003

Low Hours

HAAS # SL-20T CNC TURNING CENTER



New 2005

Aerospace

MATSUURA # ES-550 CNC VMC



Like New

New 2013

New Costs \$30,000+

COSEN #C-260-NC "AUTOMATIC" BAND SAW

Sale under Management of:

Thomas Industries, Inc.

2414 Boston Post Road, Guilford, CT 06437-2310

Phone (203) 458-0709 • Fax (203) 458-0727

email: gavel@thomasauction.com

www.thomasauction.com

